

FEATURES OF MICROCURRENT SF3 FACIAL MASK

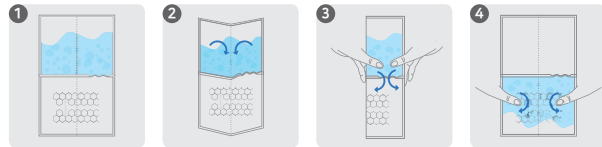
BATTERY

- ▶ Power supply is 0.1mA~25mA ▶ Rated voltage (V): 3.7v DC
- ▶ Static current: Below 1uA
- ▶ Battery type: Rechargeable lithium battery 100mAh
- ▶ Type-C Charging Cable x ▶ Auto Timer: 20 minutes

SOFTWARE DESCRIPTION

- 1 A variety of waveforms
- 2 Durable and reusable
- 3 Automatically turn off after 20 minutes
- 4 The instrument will automatically shut down after 3 minutes of non-working state
- 5 The initial output power consumption of the power supply is 0.1mA~25mA

STEP 1: POUCH USAGE INSTRUCTIONS



1. Please prepare the pouch.
2. Fold the pouch in half vertically.
3. Squeeze the side with the liquid firmly to pop it.
4. After unfolding the pouch, press the mask to evenly distribute the liquid onto it.

STEP 2: FACIAL MASK INSTRUCTIONS



Attaching a Mask Sheet

After cleansing, take out the sheet mask and apply it to fit your face. Remove the mesh layer and use your hands to firmly adhere it evenly to your face.



Battery Attachment

Press the center button on the battery for 3 seconds until the light turns on. With the light on, attach the magnet to the middle connecting part on your forehead.



Finish

Use it in this state for 20 minutes. After 20 minutes, when the light on the battery goes off, remove the battery to recharge it and remove the sheet mask from your face.



RICHWAY & FUJI BIO SCIENCE SF3 FACIAL MASK WITH MICROCURRENT

Concentrated Care Facial Mask: The Perfect Fusion of Microcurrent-Exclusive Silver Mask and Luxuriously Comforting Elasticity Essence for Firm Hydration in Your Skin.

SF3 - ULTIMATE USER GUIDE:

- 1 Charge the battery for at least 30 minutes to ensure ample power.
- 2 Begin by thoroughly cleansing your face of impurities and residual makeup.
- 3 Gently cleanse using a warm towel for best results.
- 4 Squeeze the liquid-containing pouch firmly to transfer the liquid into the masked compartment.
- 5 Press the packaging evenly to ensure sufficient liquid permeates the mask.
- 6 Once the mask is evenly soaked, tear open the packaging and retrieve the mask.
- 7 Unfold the mask, and you will notice a mesh attached for easy application. Affix the meshed mask onto your face.
- 8 Gently pat the mask onto your face to secure it, then remove the mesh.
- 9 Press the button in the center of the battery for 3 seconds to activate the light. Attach the battery to your forehead.
- 10 After attaching the battery, lie down for 20 minutes. The battery will automatically turn off after 20 minutes.
- 11 To achieve optimal results, include SF3 in your daily skincare routine.
- 12 For enhanced effects, use SF3 before going to bed and get a restful sleep.



RICHWAY & FUJI BIO INC.

www.richwayandfujibio.com

THE
RICHWAY
GROUP

Instantly Smooth Skin Pomegranate Extract

SF3 FACIAL MASK

WITH MICRO CURRENT



RICHWAY & FUJI BIO INC.

1314 SOUTH KING STREET SUITE 520, HONOLULU, HI 96814 USA
TEL: +1-808-589-2800 TOLL-FREE: +1-855-338-6410 FAX: +1-808-597-1651
www.richwayandfujibio.com

INGREDIENTS: AQUA, GLYCERIN, PROPYLENE GLYCOL, GLYCERETH-26, HYDROXYACETOPHENONE 1,2-HEXANEDIOL, CARBOMER, TRIETHANOLAMINE, HYDROLYZED SCLEROTIUM GUM, BUTYLENE GLYCOL, PEG-40 HYDROGENATED CASTOR OIL, TREMELLA FUCIFORMIS POLYSACCHARIDE, POLYGLUTAMIC ACID, DISODIUM EDTA, SODIUM HYALURONATE, PARFUM GLYCERYL ACRYLATE/ACRYLIC ACID COPOLYMER, PVM/MA COPOLYMER, PUNICA GRANATUM FRUIT EXTRACT

SF3 MICRO CURRENT

MICROCURRENT STIMULATES THE FACE BY SENDING GENTLE ELECTRICAL WAVES THROUGH THE SKIN AND TISSUES TO THE FACIAL MUSCLES.

Microcurrent has been shown to stimulate ATP production, stimulate facial muscle vitality and promote collagen and elastin production. The microcurrent pair stimulates muscle movement and accelerates the synthesis of collagen on the face. When using microcurrent, the conductive mask cloth should be used as the medium. The function of the conductive mask cloth is to introduce micro-current into the human body. Under normal circumstances, the human body cannot feel the electric current introduced into the human body.



PUNICA GRANATUM POMEGRANATE EXTRACT

Pomegranate Extract is known for its distinctive red color and is associated with numerous health benefits. Pomegranate fruit is rich in nutrients such as Vitamin C, Vitamin K, saturated fatty acids, polyphenols, and antioxidants. These components can potentially have positive effects on both skin and overall health.



When **PUNICA GRANATUM POMEGRANATE EXTRACT** is used in cosmetics and skincare products, it leverages the antioxidant properties and moisturizing effects of pomegranate fruit. This can help to keep the skin hydrated and soft. Additionally, it may provide nourishment to the skin and contribute to improving skin tone.

INTENSIVE MOISTURIZER SODIUM HYALURONATE ACID

It is used to provide moisture and hydration to the skin due to its high waterholding capacity. Specifically, Sodium Hyaluronate is highly effective at maintaining skin's moisture content as it can hold water several times its own weight. It is utilized in various products to enhance skin moisturization and hydration, and is particularly beneficial for dry skin. It is popular for its high safety profile on the skin and low allergenic potential, making it a favored ingredient for promoting hydration.



SF3 FACIAL MASK WITH MICRO CURRENT

BE BEAUTIFUL, ONLY THE BEST WITH POMEGRANATE EXTRACT



NEW AND INTENSIVE SKIN CARE
USE ONCE DAILY WITH YOUR SKIN CARE ROUTINE.



DEEP MOISTURIZER POLYGLUTAMIC ACID

Having similar properties to hyaluronic acid, polyglutamic acid possesses excellent abilities to maintain moisture and provide hydration to the skin. It can also contribute to improving skin tone and reducing wrinkles.

It is utilized to enhance moisture retention and provide a radiant appearance to the skin. Its larger molecular size compared to hyaluronic acid allows for an extended moisturizing effect.

HYDROLYZED SCLEROTIUM GUM

This is extracted from the nut body of a mushroom known as Schizophyllum commune. Hydrolyzed Schizophyllum commune extract possesses excellent moisture-retaining properties and adhesive qualities. This ingredient helps maintain moisture and supply hydration to the skin.



In cosmetics, hydrolyzed Schizophyllum commune extract is primarily used to enhance the moisturizing function of products. Additionally, it imparts softness to the skin and contributes to increasing the product's adhesive properties, aiding in prolonging skin hydration.

TREMELLA FUCIFORMIS POLYSACCHARIDE

This is a polysaccharide extracted from the snow mushroom (Tremella fuciformis), a type of mushroom. This mushroom is known for its powerful moisturizing properties that can help maintain beautiful skin. In particular, Tremella polysaccharide possesses a high moisture-retaining ability, making it useful for supplying moisture and aiding in hydration for the skin. It is primarily used to strengthen the skin's moisture barrier and provide a sense of moisture and softness to the skin. Additionally, it can contribute to enhancing skin elasticity and improving wrinkles.